

55/147

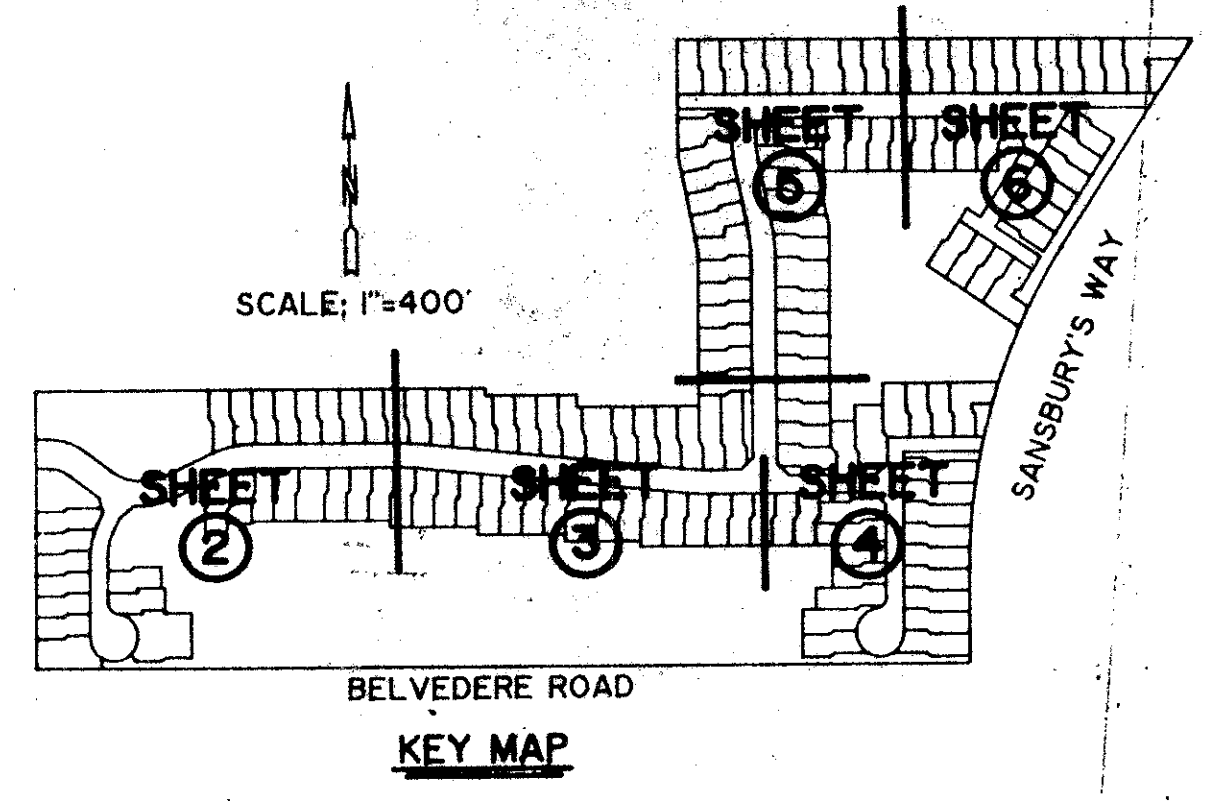
147

BREAKERS WEST PLAT NO. 13 "THE COLONY"

— "A PART OF A PLANNED UNIT DEVELOPMENT" —
PALM BEACH COUNTY, FLORIDA

JANUARY 1987
Hutcheon Engineers
CIVIL ENGINEERS & SURVEYORS
WEST PALM BEACH, FLORIDA

- SURVEYORS NOTES:**
- Easements:**
 - No buildings or any kind of construction shall be placed in utility or drainage easements.
 - No structures, trees or shrubs shall be placed on drainage easements.
 - Approval of landscaping on utility easements other than water and sewer shall be only with the approval of all utilities occupying same.
 - Where a drainage easement and any other type of easement cross, any and all uses for drainage purposes shall take precedence.
 - Bearings shown hereon are consistent with the bearings shown on BREAKERS WEST PLAT NO. 2, Plat Book 36, Pages 31 thru 35.

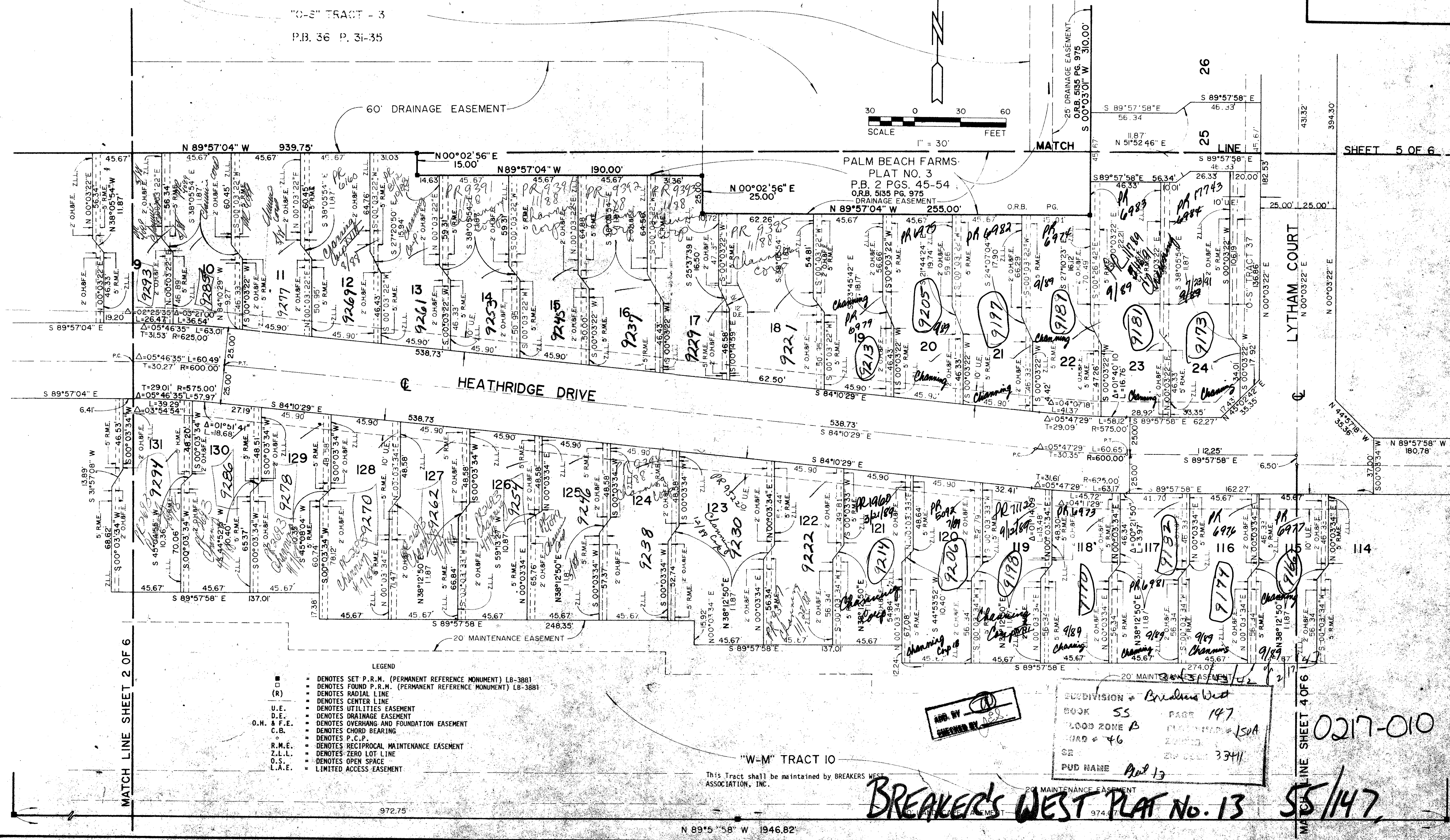


SHEET 3 OF 6 SHEETS

DRAWING NUMBER

DRAWING NUMBER

DRAWING NUMBER



- LEGEND**
- DENOTES SET P. R. M. (PERMANENT REFERENCE MONUMENT) LB-3881
 - DENOTES FOUND P. R. M. (PERMANENT REFERENCE MONUMENT) LB-3881
 - (R) DENOTES RADIAL LINE
 - DENOTES CENTER LINE
 - U.E. DENOTES UTILITIES EASEMENT
 - D.E. DENOTES DRAINAGE EASEMENT
 - O.H. & F.E. DENOTES OVERHANG AND FOUNDATION EASEMENT
 - C.B. DENOTES CHORD BEARING
 - P.C.P. DENOTES P.C.P.
 - R.M.E. DENOTES RECIPROCAL MAINTENANCE EASEMENT
 - Z.L.L. DENOTES ZERO LOT LINE
 - O.S. DENOTES OPEN SPACE
 - L.A.E. DENOTES LIMITED ACCESS EASEMENT

APPROVED BY: [Signature]

SUBDIVISION Breakers West
 BOOK 55 PAGE 147
 ZONING ZONE B
 ROAD # 46
 PUD NAME [Signature]

0217-010

BREAKERS WEST PLAT NO. 13

55/147

N 89°57'58" W 1946.82'

LINE SHEET 4 OF 6

SHEET 5 OF 6